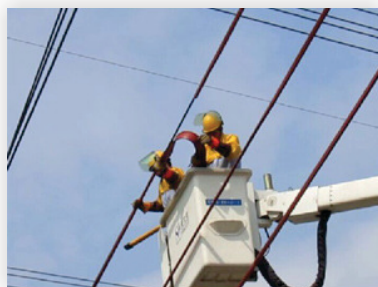
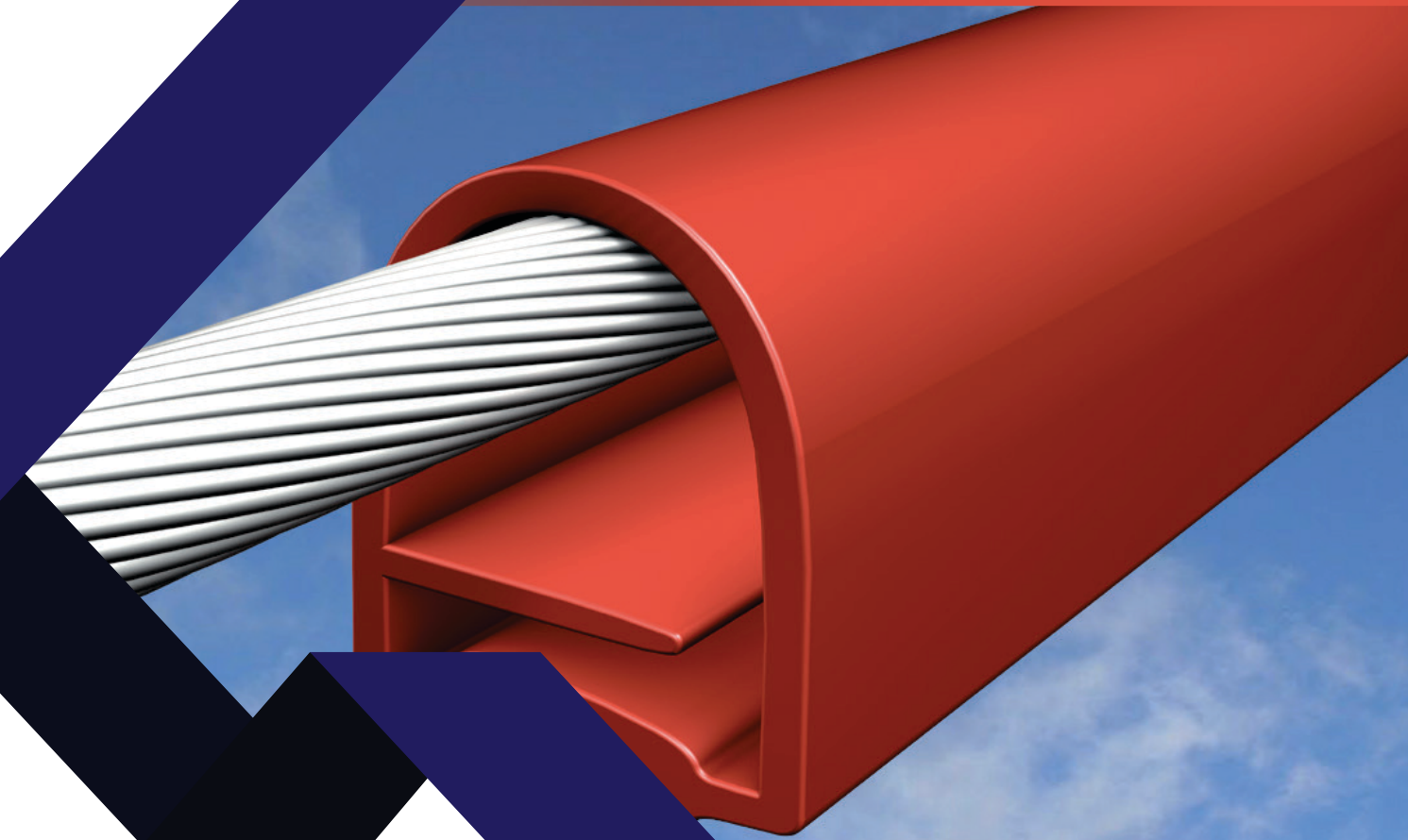


MVLC - MEDIUM VOLTAGE LINE COVER (TREE GUARD)

WILDLIFE AND ASSET PROTECTION PRODUCTS



LENUSA (PT. LAUTAN ENERGI NUSANTARA)

Gedung 18 Office Park Fl. 22 Unit 22 E,F,G Jl.TB. Simatupang Kav. 18 Jakarta Selatan

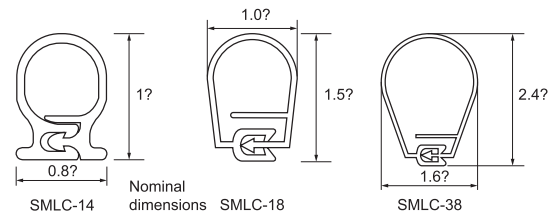
M: 0811 1328 899 T: 021-8064 1978 F: 021-8064 1999 E: sales@lenusa.co.id - info@lenusa.co.id - pt.lenusa@gmail.com
www.lenusa.co.id

Main characteristics

- Snap-in device, simple and easy installation, installation is finished just by snapping in the two terminals.
- Built-in creepage extender, increase the creepage distance, and improve the insulation property.
- Built-in sealant, strengthen the sealing efficiency.
- Excellent weathering resistance and insulating performance, anti-creepage, abrasion resistant, ultraviolet resistance;
- Hot-line installation, positioning mounting is available, simple construction;
- It is applicable for emergency maintenance and temporary insulation protection.

Application

- Snap-in insulation protecting band is mainly applied to aerial bare line in electrified railway system when crossing tunnel, bridge and tropical rain forest, used to improve its insulation performance, prevent occurring of short circuit, and reinforce the insulation protection of aerial bare line effectively.
- It is mainly applied to line crossing insulation protection of aerial bare line of 15kV and 35kV in power system.
- It is mainly applied to reinforced insulation protection of aerial bare line crossing forest, building, tunnel, river, etc.
- It also can be applied to the insulator part on the aerial bare line of railway system, used to improve its insulation performance.



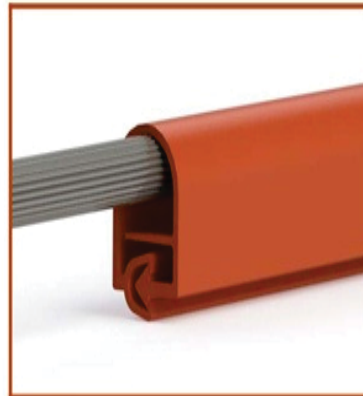
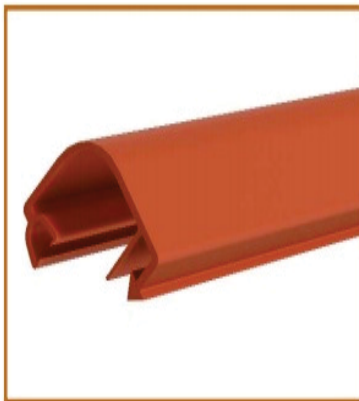
Technical Data

Property	Test method	Typical data
Tensile strength (Mpa)	GB/T1040-1992	≥ 12
Elongation at break (%)	GB/T1040-1992	≥ 400
Dielectric strength (kV/mm)	GB/T1408-1989	≥ 42
Volume resistance (Ω/cm)	GB/T1410-2006	1 × 10 ¹³
Dielectric constant (ε)	GB/T1409-2006	3.0 max
Flammability (oxygen index)	GB/T2406-1993	≥ 27

Product Dimensions

Normal size (mm)	Voltage Glass (kV)	Conductor Size (mm ²)	Conductor O.D (mm)	Length (m/roll)
SMLC-14A	1-15	Under 70	12	20
SMLC-14B	1-35	Under 70	12	20
SMLC-18A	1-15	Under 120	16	20
SMLC-18B	1-35	Under 120	16	20
SMLC-20A	1-15	150	18	20
SMLC-20B	1-35	150	18	20
SMLC-28A	1-15	Under 300	24	20
SMLC-28B	1-35	Under 300	24	20
SMLC-38A	1-15	Under 630	35	20
SMLC-38B	1-35	Under 630	35	20

LENUSA – PT. LAUTAN ENERGI NUSANTARA Voltage Line Cover (Tree Guard)

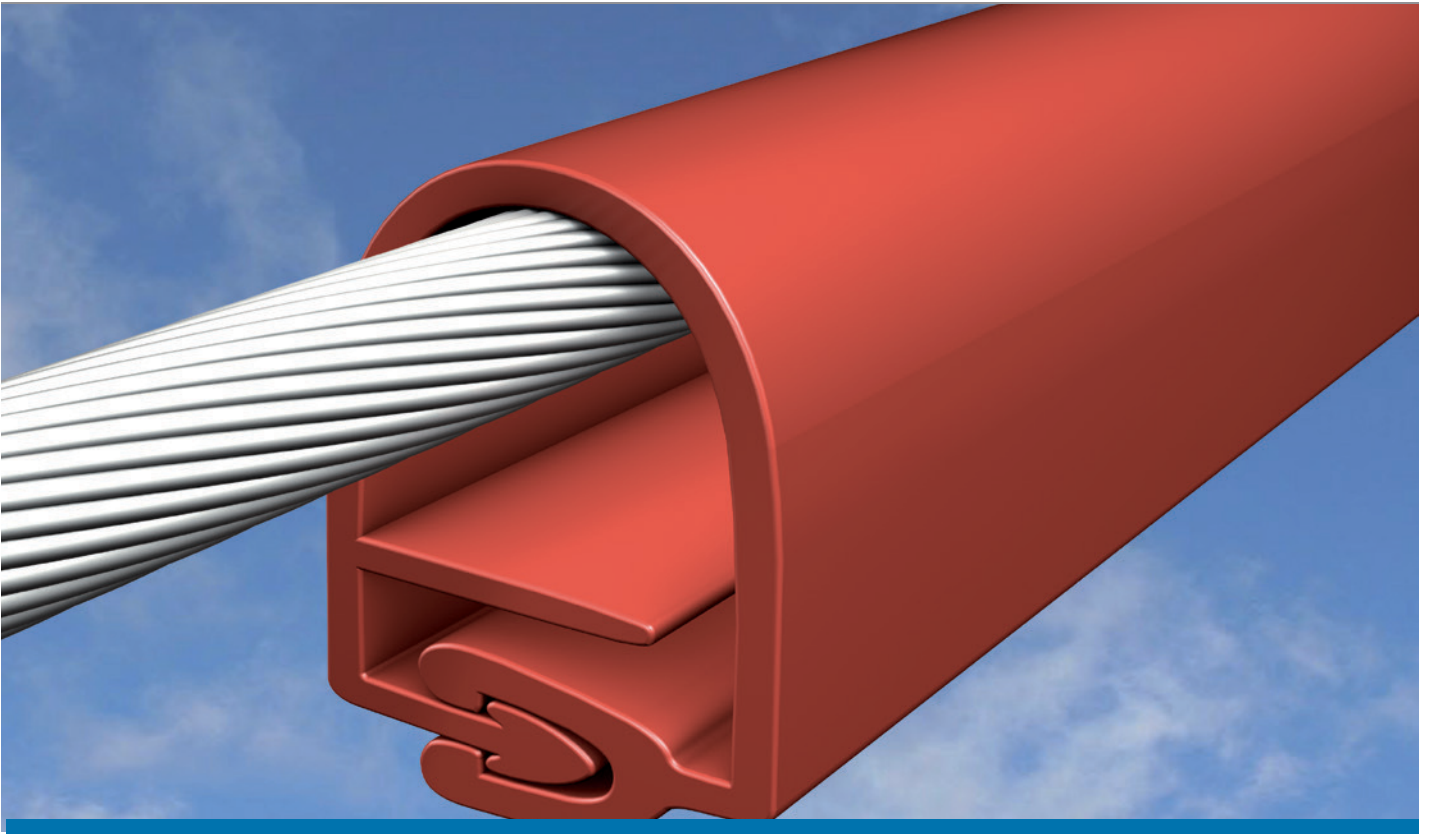


Insulation Enhancement Products are the combination of Heat Shrinkable Tubes, tapes, Sheets & Preformed Components Which are having the following Features & Benefits :

Electrical Distribution equipment with bare bus bars, conductors and connections is always at risk to having phases or phase to ground accidentally bridged As well as the obvious problems caused to the network, such events can also endanger protected wildlife. Birds and animals often enters substations and interfere with overhead lines causing faults by bridging air clearances.

Features:

- Anti-tracking
- UV resistance, and abrasion resistance
- Easy installation with hand tool
- Operating temperature: -40°C to 80°C
- Standard color: red (black, green and yellow are available on request)



MEDIUM VOLTAGE LINE COVER MVLC

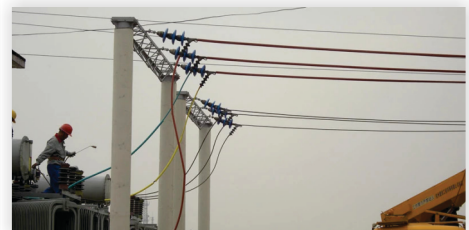
WILDLIFE AND ASSET PROTECTION PRODUCTS

Medium voltage line cover MVLC provides state-of-the-art insulation to help prevent electrical outages caused by trees or wildlife coming into contact with distribution lines.

Cover MVLC is designed to insulate existing bare lines without costly conductor replacement expenditures or additional line hardware. It may be applied selectively on problem spans when temperatures are above 0°C.

Connectivity has designed a special tool that ensures fast and reliable application of the cover MVLC. The tool allows application on energized lines, when used by an appropriate line installation crew. It attaches directly to the overhead conductor on each span.

The tool may be manually or automatically operated, using a hand crank or with the aid of a powered drill. The tool forms, closes and feeds the cover MVLC along the conductor with speed and consistency. MVLC hand tool allows for quick installation on short lengths of conductors, especially in substations.



LENUSA (PT. LAUTAN ENERGI NUSANTARA)

Gedung 18 Office Park Fl. 22 Unit 22 E,F,G Jl.TB. Simatupang Kav. 18 Jakarta Selatan

M: 0811 1328 899 T: 021-8064 1978 F: 021-8064 1999 E: sales@lenusa.co.id - info@lenusa.co.id - pt.lenusa@gmail.com
www.lenusa.co.id